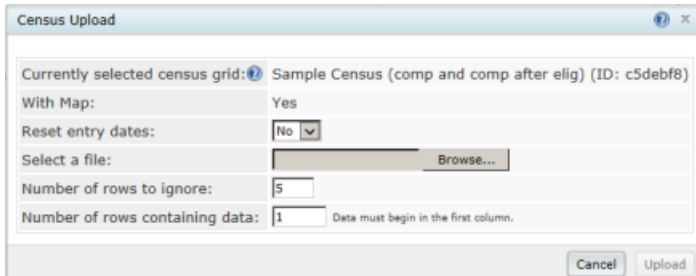


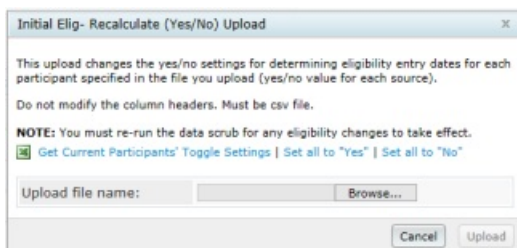
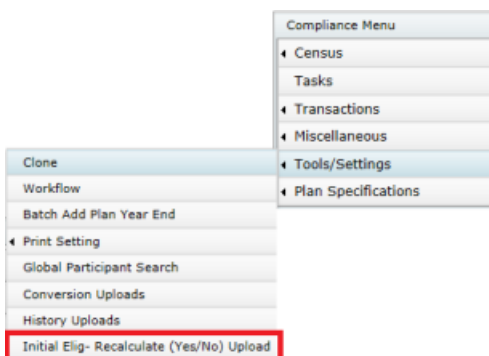
10.4. Recalculate Initial Eligibility

10/29/2024 4:35 pm CDT

In the first plan year of the system, to have the system recalculate initial eligibility on a global basis, simply reupload the census, setting "Reset Entry Dates" to yes from within the Census Upload box. Then run the data scrub. Review the "Eligibility Status Report" to confirm that eligibility is correct.



Eligibility should always be correct in the first year of the system so that subsequent years are also correct. There are cases where, in subsequent years in the system, eligibility may need to be recalculated; such as when an amendment has changed eligibility requirements. In these cases, initial eligibility can be recalculated on a global or individual basis by using the "Initial Elig - Recalculate (Yes/No) Upload" tool that is found in Tools/Settings from within the Compliance Menu.



To have the system recalculate all sources for all participants in the census, click the "Set all to "Yes"" link. This will automatically update every source for every participant to "Yes", recalculate. Close the box, then rerun the data scrub.

To have the system recalculate initial eligibility for only certain sources and/or certain participants, click the "Get Current Participants' Toggle Settings" link, and save this file to your computer. Open the file and change the individual sources/participants to "Yes" for those sources/participants for which you wish the system to recalculate eligibility. Note that leaving these fields blank will have the same effect as entering "No". Upload this file by clicking the "Browse" button from within the "Initial Elig - Recalculate (Yes/No) Upload" window. Close the box, then rerun the data scrub.

When the data scrub is now run, eligibility, dates met and entry dates will be recalculated for applicable participants/sources that were selected to be recalculated.

Please note that running the data scrub automatically resets all participant's recalculation fields to "No". Users can also click on the "Set all to 'No'" link to change the recalc field for all sources and all participants to "No".
